

Kelso

Call 01573 400399



CULLEN KILSHAW
SOLICITORS & ESTATE AGENTS

WWW.CULLENKILSHAW.COM



Oamaru, 2 Abbotseat Road, Kelso, TD5 7SL

Guide Price £285,000



This exceptional detached family home offers an impressive amount of living space and flexible accommodation, making it perfect for growing families. The property boasts a spacious and private rear garden, ideal for outdoor entertaining or simply enjoying the tranquility of your own space. A double garage and driveway provides ample storage and private parking, while the shared entrance ensures convenience and easy access. Located in the highly desirable town of Kelso, this home is just a short distance from Broomlands & Edenside Primary Schools, as well as Kelso High School, making it an excellent choice for families. With its prime location and spacious design, this property truly offers a wonderful balance of modern living and a peaceful, family-friendly environment. Viewing recommended.



Oamaru, 2 Abbotseat Road, Kelso, TD5 7SL

Guide Price £285,000

Ground Floor:
Hall
Lounge
Conservatory
Dining Kitchen
Utility Room
Bathroom
Double Bedroom

First Floor:
Landing
Two Further Double Bedrooms
WC

Gas Central Heating
Double Glazing

Surrounding Garden
Double Garage & Driveway
Shared Access



Location

Kelso is one of the most attractive towns in the Scottish Borders, situated at the confluence of the Rivers Tweed and Teviot with its focal point being the Flemish style town square. There are excellent facilities in Kelso including National Hunt racing, Curling, Golf, Swimming, Rugby, Tennis, Cricket, Bowls and Fishing. Kelso lies approximately 42 miles south of Edinburgh, 25 miles west of Berwick-Upon-Tweed and 70 miles north of Newcastle Upon Tyne. The new Borders Railway link from Tweedbank to Edinburgh can be reached in around 30minutes from Kelso.

Fixtures & Fittings

The sale shall include all carpets and floor coverings, light fittings, and the kitchen and bathroom fittings.

Services

Mains drainage, water, electricity and gas. Double Glazing. Gas Central heating

EPC

D

Council Tax Band

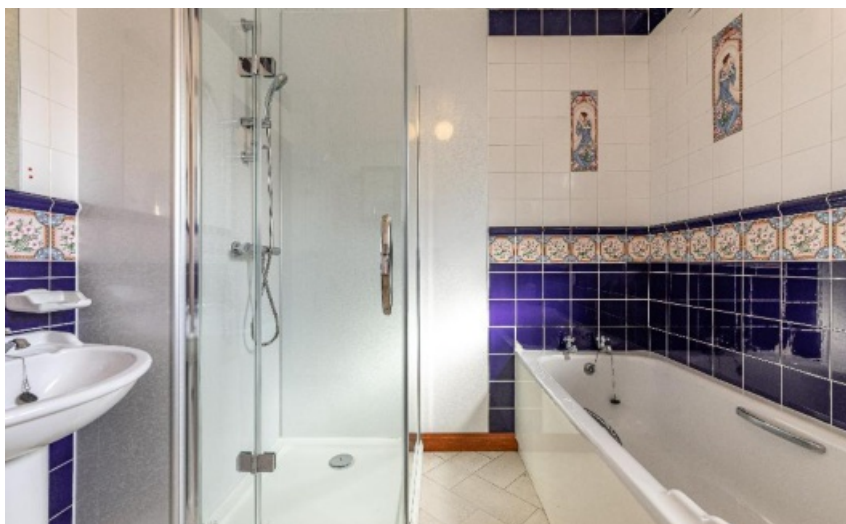
F

Viewing

By appointment with the Selling Agent

Entry

By mutual agreement



**Interested in this property?
Call 01573 400399**

43 The Square,
Kelso, TD5 7HL
Phone: 01573 400399
Fax: 01573 400388
Email: kelso@cullenkilshaw.com

Opening Hours:
Monday to Friday: 9.00am to 5.00pm
Saturday: 9.00am to 12.00 noon

Also At:

Galashiels, Tel 01896 758 311
Jedburgh, Tel 01835 863 202
Hawick, Tel 01450 3723 36
Kelso, Tel 01573 400 399
Melrose, Tel 01896 822 796
Peebles, Tel 01721 723 999
Selkirk, Tel 01750 723 868
Langholm, Tel 013873 80482
Annan, Tel 01461 202 866/867



Oamaru, 2 Abbotseat Road, Kelso, TD5 7SL

Approximate Gross Internal Area = 160.7 sq m / 1730 sq ft



Illustration for identification purposes only. measurements are approximate, not to scale. Fourlabs.co © (ID1184111)

Full members of:



Whilst these particulars are prepared with care and are believed to be accurate neither the Selling Agent nor the vendor warrant the accuracy of the information contained herein and intending purchasers will be held to have satisfied themselves that the information given is correct.