

**Kelso**

Call 01573 400399



**CULLEN KILSHAW**  
SOLICITORS & ESTATE AGENTS

WWW.CULLENKILSHAW.COM



## **Braeside, Auchencrow,**

Eyemouth, TD14 5LS

**Guide Price £140,000**



A beautiful terraced cottage, situated in the charming village of Auchencrow, offering the perfect retreat for those seeking a peaceful rural lifestyle. The accommodation features a bright and welcoming open-plan sitting room, dining area and kitchen, ideal for modern living. To the rear, a porch provides useful additional storage. Upstairs, there are two comfortable bedrooms and a bathroom. Outside, a small private courtyard offers a low-maintenance space to enjoy the fresh air, while on-street parking is available at the front of the property. An ideal home, holiday escape, or investment opportunity – early viewing is highly recommended.



# Braeside, Auchencrow, Eyemouth, TD14 5LS

**Guide Price £140,000**

**Ground Floor:**  
Entrance Hall  
Open Plan Sitting Room, Dining Area & Kitchen  
Rear Porch

**First Floor:**  
Landing  
Two Bedrooms  
Bathroom

Electric Heating  
Double Glazing  
Courtyard to the Rear  
On-Street Parking



## Situation

Auchencrow is a peaceful village nestled in the scenic Scottish Borders, surrounded by rolling countryside and rich local history. The village is ideally positioned just 15 minutes by car to Berwick-upon-Tweed railway station and around 10 minutes to the newly reopened Reston station, offering regular rail links to Edinburgh and Newcastle. Edinburgh lies approximately 50 miles north (around 1 hour 15 minutes by car), while Newcastle is about 65 miles south (roughly 1 hour 20 minutes). With close proximity to the Berwickshire coast and the towns of Eyemouth and Duns, Auchencrow combines rural tranquillity with excellent connectivity.

## Fixtures and Fittings

The sale shall include all carpets and floor coverings, light fittings, and the kitchen and bathroom fittings.

## Services

Mains drainage, water and electricity. Double Glazing. Electric Heating.

## EPC

F

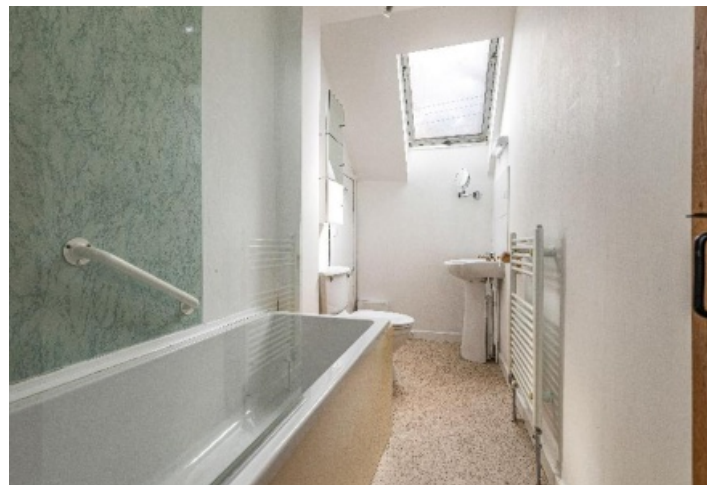
## Council Tax

B



## Braeside, Auchencrow, Eyemouth, TD14 5LS

Approximate Gross Internal Area = 72 sq m / 775 sq ft



**CULLEN KILSHAW**  
SOLICITORS & ESTATE AGENTS

WWW.CULLENKILSHAW.COM

**Kelso Call 01573 400399**

Gala • Hawick • Jedburgh • Kelso • Melrose • Peebles • Selkirk

Also at  
Galashiels, Tel 01896 758 311  
Jedburgh, Tel 01835 863 202  
Hawick, Tel 01450 3723 36  
Kelso, Tel 01573 400 399  
Melrose, Tel 01896 822 796  
Peebles, Tel 01721 723 999  
Selkirk, Tel 01750 723 868  
Langholm, Tel 013873 80482

Whilst these particulars are prepared with care and are believed to be accurate neither the Selling Agent nor the vendor warrant the accuracy of the information contained herein and intending purchasers will be held to have satisfied themselves that the information given is correct.

Full members of:

