

Kelso

Call 01573 400399

CULLEN KILSHAW
SOLICITORS & ESTATE AGENTS

WWW.CULLENKILSHAW.COM



The Furrows Main Street Whitsome

TD11 3NB

Guide Price £185,000



Nestled amidst the rolling hills of beautiful Berwickshire, The Furrows is a charming two-bedroom terraced cottage enjoying stunning open countryside views to the rear and offering buyers the perfect opportunity to create a home tailored to their own taste and style. The property would benefit from a degree of updating but offers fantastic potential for those looking to put their own stamp on a characterful country cottage in a peaceful rural setting. Situated in the peaceful village of Whitsome, the property combines idyllic rural living with convenient access to the wider Borders and beyond, with the larger towns of Duns, Berwick-upon-Tweed and Eyemouth all within easy reach for everyday amenities, schooling and leisure facilities. Berwick-upon-Tweed also provides a mainline railway station with regular services to Edinburgh, Newcastle and London, making the property an appealing choice for commuters, weekend retreats or those seeking a quieter pace of life. The accommodation comprises: Hall, lounge, dining kitchen and utility/WC on the ground floor, with two double bedrooms and a shower room upstairs. Outside, there is a garage/workshop, rear garden, greenhouse and shed. Viewing highly recommended.



The Furrows Main Street Whitsome

TD11 3NB

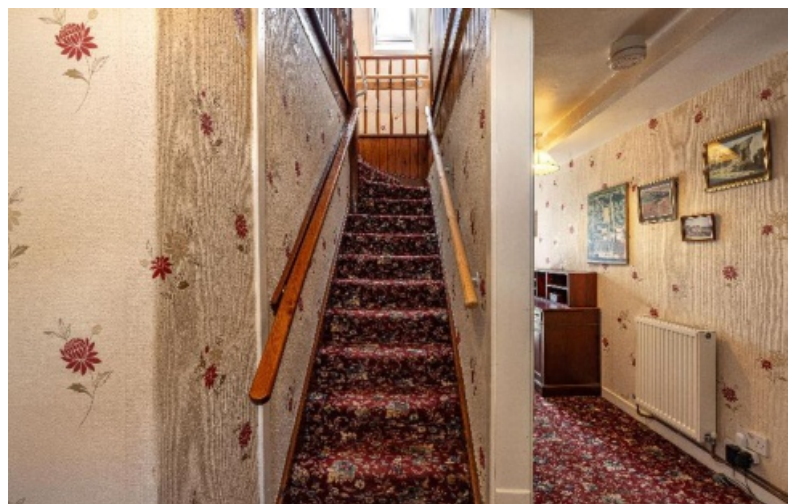
Guide Price £185,000

Ground Floor:
Hall
Lounge
Dining kitchen
Utility/WC

First Floor:
Landing
Two Double Bedrooms
Shower Room

Double Glazing
Oil Fired Central Heating

Garden to rear
Garage/Workshop
Greenhouse
Shed



Location

Nestled in the heart of picturesque Berwickshire, Whitsome is a charming village, located approximately 8 miles from Duns, 10 miles from Berwick-upon-Tweed and 45 miles from Edinburgh. Primary schooling is available in the nearby villages of Swinton and Chirnside and secondary education at Duns High School. Whitsome boasts a range of essential amenities, including a village shop for your daily needs, a post office, and the vibrant Whitsome Ark, a purpose-built community centre that serves as a hub for social gatherings and activities. More comprehensive facilities can be found in the surrounding towns or in Berwick-upon-Tweed where there is access to the east coast rail link and also the main A1 trunk road.

Fixtures & Fittings

The sale shall include all carpets and floorcoverings, light fittings, kitchen fittings and bathroom fittings.

Services

Mains drainage, water and electricity. Oil fired central heating, double glazing.

EPC

F

Council Tax Band

B

Viewing

Strictly by appointment with the Selling Agent.

Entry

By mutual agreement.



Interested in this property?
Call 01573 400399

43 The Square,
Kelso, TD5 7HL
Phone: 01573 400399
Fax: 01573 400388
Email: kelso@cullenkilshaw.com

Opening Hours:
Monday to Friday: 9.00am to 5.00pm
Saturday: 9.00am to 12.00 noon

Also At:

| | |
|-------------|-----------------------|
| Galashiels, | Tel 01896 758 311 |
| Jedburgh, | Tel 01835 863 202 |
| Hawick, | Tel 01450 3723 36 |
| Kelso, | Tel 01573 400 399 |
| Melrose, | Tel 01896 822 796 |
| Peebles, | Tel 01721 723 999 |
| Selkirk, | Tel 01750 723 868 |
| Langholm, | Tel 013873 80482 |
| Annan, | Tel 01461 202 866/867 |
| Tranent, | Tel 01875 611211 |



The Furrows, Main Street, Whitsome

Approximate Gross Internal Area = 101.5 sq m / 1092 sq ft
External Utility = 4.5 sq m / 48 sq ft
Total = 106.0 sq m / 1140 sq ft



Illustration for identification purposes only, measurements are approximate, not to scale. Fourlabs.co © (ID13D1933)

Full members of:



Whilst these particulars are prepared with care and are believed to be accurate neither the Selling Agent nor the vendor warrant the accuracy of the information contained herein and intending purchasers will be held to have satisfied themselves that the information given is correct.