

Jedburgh

Call 01835 863202

CULLEN KILSHAW
SOLICITORS & ESTATE AGENTS

WWW.CULLENKILSHAW.COM



Field, Newmill Farm, Jedburgh

TD8 6TH

Offers Over £85,000



A fantastic opportunity to acquire a large area of Class 4.1 arable land, approximately 13.5 acres or thereby, lying two miles north of Jedburgh, next to the Jed Water in rolling Borders countryside. The land has been let for grazing on a seasonal basis. Ideally placed for access to the A68 trunk road through the Borders, providing easy access to Edinburgh and Newcastle. Please note that the field is currently sown in oats and has been under sown in grass. The oats and straw are not included in the purchase price. Entry will be given in September/October, once the oats have been harvested.

Field, Newmill Farm, Jedburgh

TD8 6TH

Offers Over £85,000



Location

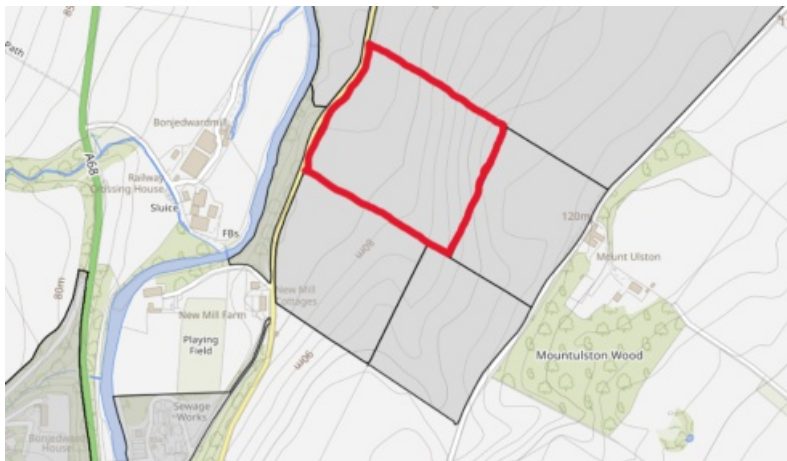
Lying on the banks of the Jed Water, the picturesque Abbey town of Jedburgh enjoys easy access to many of the principal towns and employers of the region and is also readily accessible for major locations both north and south bound via the A68. Tweedbank Railway Station providing access to Edinburgh is around a 25 minute drive from the town. The beauty of the region coupled with the numerous historic buildings make this a location popular with locals and tourists alike.

Viewing

Visit site.

Services

Mains electricity, water and drainage nearby.



CULLEN KILSHAW
SOLICITORS & ESTATE AGENTS

WWW.CULLENKILSHAW.COM

Jedburgh Call 01835 863202

Gala • Hawick • Jedburgh • Kelso • Melrose • Peebles • Selkirk

Also at
Galashiels, Tel 01896 758 311
Jedburgh, Tel 01835 863 202
Hawick, Tel 01450 3723 36
Kelso, Tel 01573 400 399
Melrose, Tel 01896 822 796
Peebles, Tel 01721 723 999
Selkirk, Tel 01750 723 868
Langholm, Tel 013873 80482

Whilst these particulars are prepared with care and are believed to be accurate neither the Selling Agent nor the vendor warrant the accuracy of the information contained herein and intending purchasers will be held to have satisfied themselves that the information given is correct.

Full members of:

